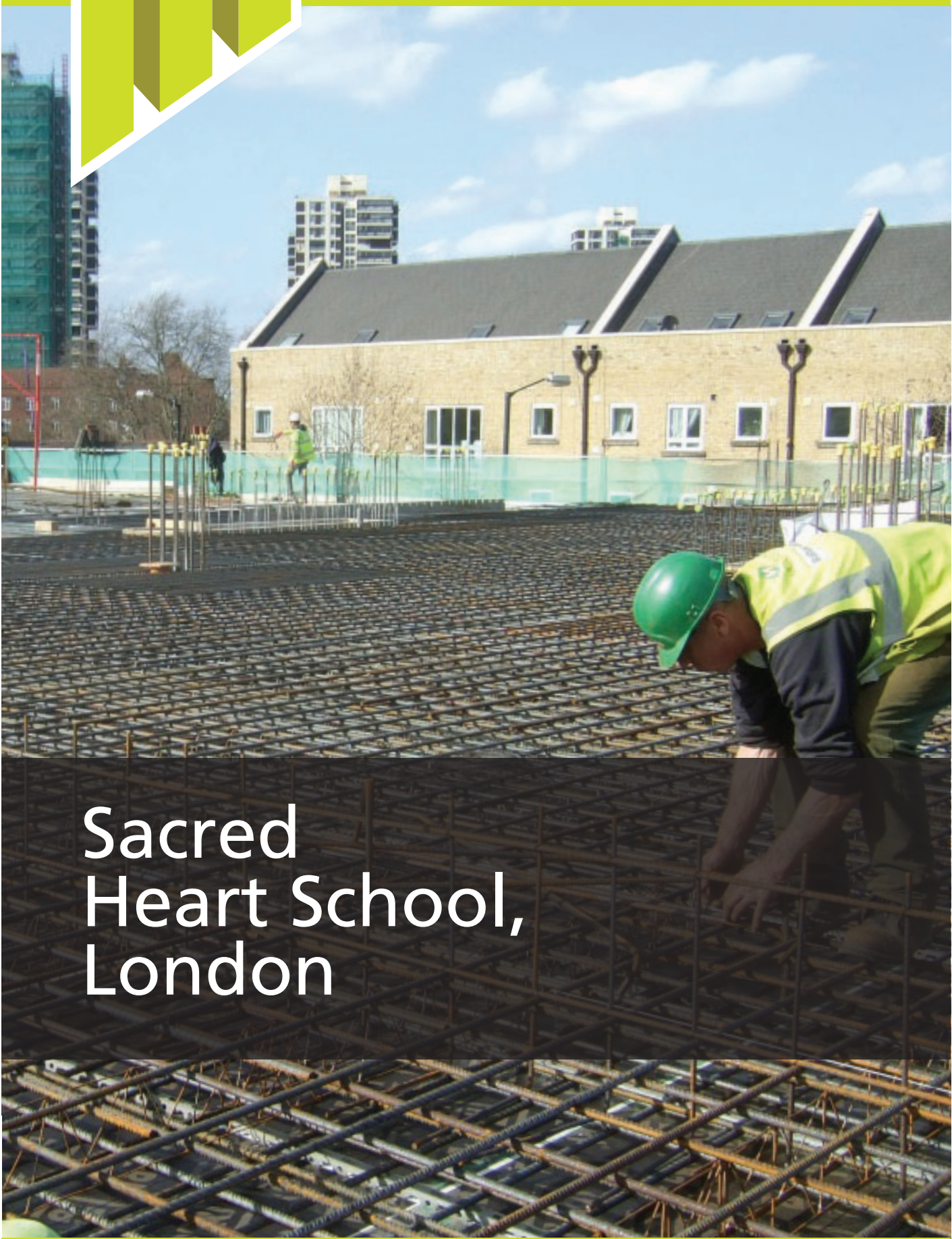


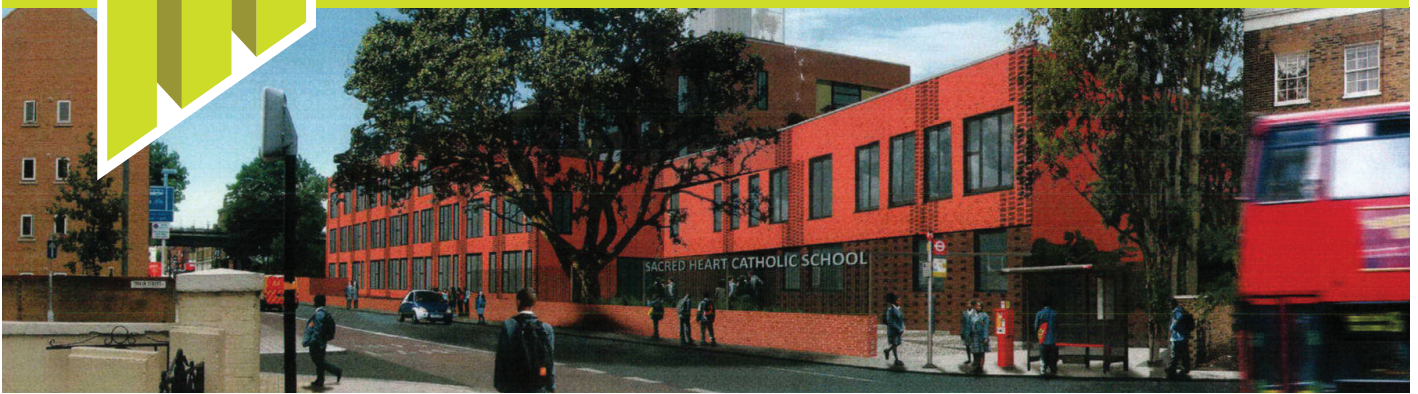
moortown



A job well done.



Sacred Heart School, London



Sector: Education
 Project: **Sacred Heart School**

Client: Sacred Heart School
 Value: £2,800,000
 Location: Camberwell, London
 Status: Complete

Key Items:

- Tight site with restricted access
- 3 storey in-situ concrete frame
- Use of panel formwork to produce regular 'Fine Smooth Finish' exposed soffits
- Drainage system, including attenuation and off site connection
- Service diversions, new service installation including HV
- Reinforced concrete cores constructed using jump form
- Exposed concrete columns

Project Description

The development of a new school including a Teaching Block, Assembly Hall, Sports Hall and Changing Block within the streets of Camberwell in Southwark, London.

The project involved the use of a tower crane to service a 4 and 3 storey reinforced concrete structure, in line with a fast paced programme of delivery, with tight working conditions, in which 3500m3 of concrete was used along with 440 ton of reinforcement.

Even the harsh weather conditions encountered during the construction didn't prevent the works from being completed with Peri used for the shutters and sky deck.



Our Accreditations



T: 01274 655477
www.moortowngroup.com